



Day 10: Baiersbronn

Highlights: Center of Germany's Haute Cuisine

After leaving Freiburg, we'll follow the Elz River deep into the Black Forest on our way to Baiersbronn. It's a long ride and you will be well rewarded tonight at dinner because Baiersbronn is famous as a center of haute cuisine. According to the New York Times, "Baiersbronn is now on its way to becoming recognized as the world's most unexpected restaurant capital." You can form your own opinions at our dinner together! Daily Distance: 111 km (69 miles).

This evening's hotel:

Hotel Sackmann
Murgtalstraße 602
72270 Baiersbronn

Tel: +49 (0) 7447/289-0

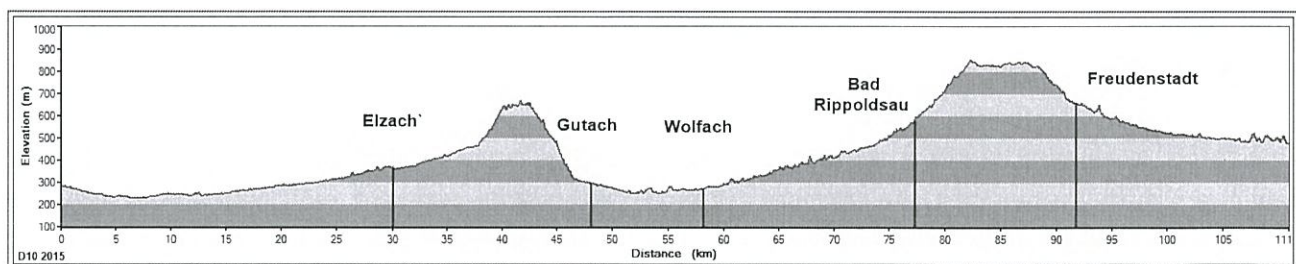
Tour leader phone numbers:

Philipp: +33 7 86 57 37 82
Jessica: +33 7 86 07 20 29

Loïc: +33 7 81 63 38 36

In an emergency call 112

Today's Ride: We take advantage of the many rivers in the black forest and follow their relatively flat valleys. After leaving Freiburg we head for the river Elz and then need to cross over to the Gutach River, following it in turn to the Kinzig River. We then follow the Wolfach River up to Bad Rippoldsau. The next crossing over the mountains into the Murg valley is a pretty tough one. So we offer a shuttle from Bad Rippoldsau to Baiersbronn. You will find a marked restaurant/ café just right off the route where we meet to shuttle.



Lunch and Dinner: We will be going through many villages with bakeries or butchers to buy picnic supplies. You will also find eateries along the way and Oberwolfach (Km58) might be a good option or while you while away your time at the shuttle point at Km77. Dinner will be together tonight.

You Might Like to Know: The Black Forest is the home of the very best German clichés. There are some places that all visitors to Germany should have seen: the Reichstag in Berlin, the Hofbräuhaus in Munich and the fairytale castle of Mad King Ludwig II. But one region is an absolute must: The Black Forest!



The home of the world-famous cuckoo clock, the 'Bollenhut', the legendary Black Forest houses and the Black Forest gâteau stands as reference for German culture but it is also a Mecca for mountain and road bikers and one of the largest hiking regions in Germany.

The region spans over 11,400 square kilometers and borders both France and Switzerland. It is a forest-bedecked sub-mountainous region occupying part of the continental divide between the Atlantic Ocean drainage basin (drained by the Rhine) and the Black Sea drainage basin (drained by the Danube).

One of the most typical images of the Black Forest is a woman dressed in the traditional costume wearing the 'Bollenhut'. The 'Bollenhut' (pompon hat) is a straw hat painted with white lime and carrying 14 wool pompons of the size of an orange. The hat has been worn by the protestant women in some villages of the Black Forest and still is worn on special holidays. For the first time a girl wears a 'Bollenhut' at her confirmation and she will continue to wear it with red 'Bollen' (pompons) until she is married and then the color of the 'Bollen' change to black. It is not an easy job to wear the hat since it weighs about 4.5 pounds!

Black Forest gâteau or *Schwarzwälder Kirschtorte*, literally "Black Forest cherry-torte" is named not directly after the Black Forest mountain range in southwestern Germany but rather from the specialty liquor of that region, known as *Schwarzwälder Kirsch (wasser)* and distilled from tart cherries. This is the ingredient, with its distinctive cherry pit flavor and alcoholic content that gives the cake its flavor. Other than that Black Forest cake consists of several layers of chocolate cake, with whipped cream and cherries between each layer. Then the cake is decorated with additional whipped cream and black or sometimes maraschino cherries.

Bike Safety Tip:

Left turns: making a left turn across traffic is one of the most dangerous things you can do. To make the turn merge into the primary through lane, signal and turn with both hands on the handlebar. If there is too much traffic for you to do this comfortably, stop to the right and walk across to the left.

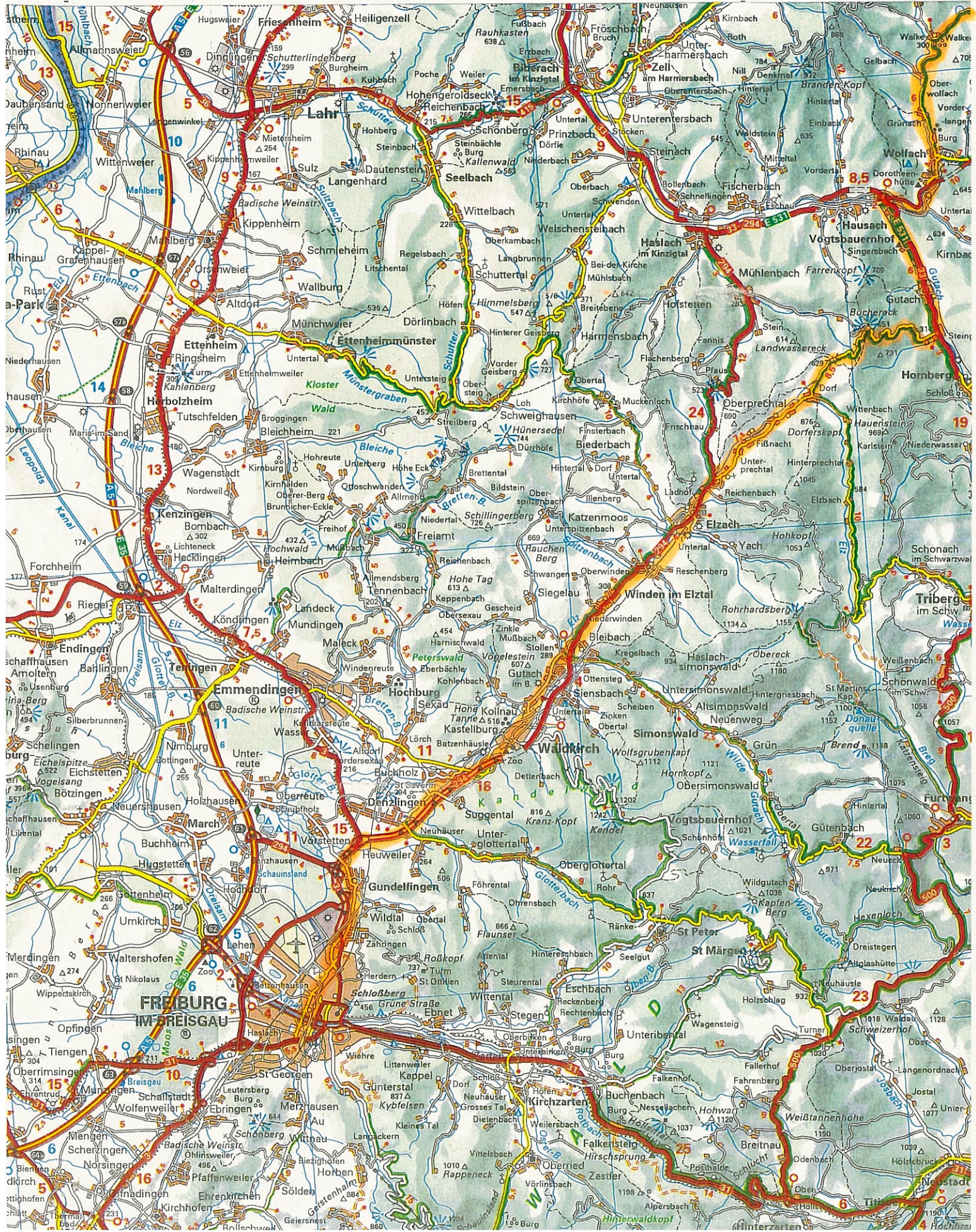
German Language Lesson of the Day:

Right/ left: *rechts/ links*

Straight ahead: *Geradeaus*

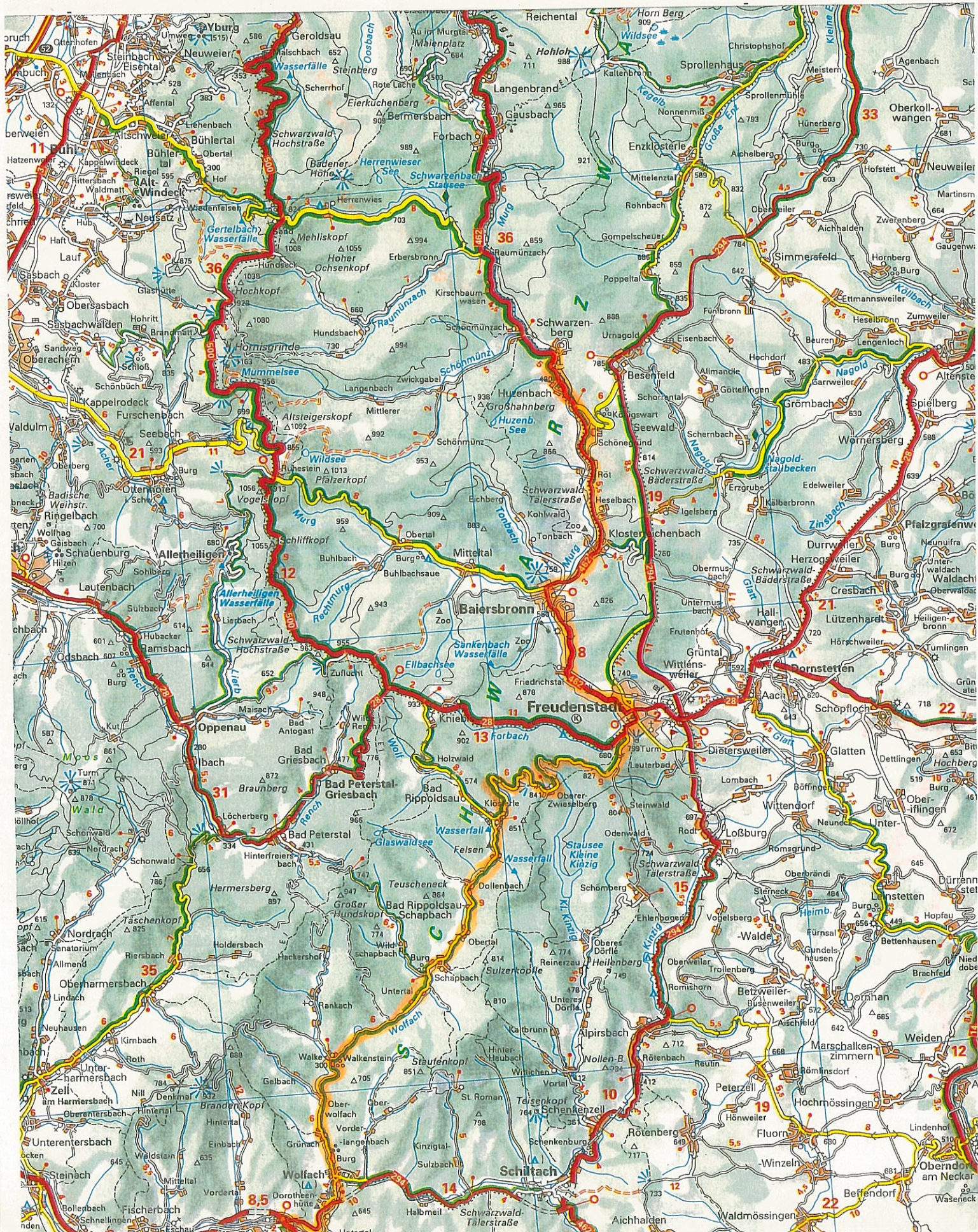
Day 10: Pedal from Freiburg to Baiersbronn Part One

Towns for Navigation: Waldkirch (16 km), Oberprechtal (38 km), Gutach (48 km), Wolfach (57 km), Walke (63 km), Bad-Rippoldsau (77 km), Freudenstadt (91 km), Baiersbronn (98 km), Hotel in Schwarzenberg (111 km).



Day 10: Pedal from Freiburg to Baiersbronn Part Two

Towns for Navigation: Waldkirch (16 km), Elzach (30 km), Gutach (48 km), Wolfach (57 km), Walke (63 km), Bad-Rippoldsau (77 km), Freudenstadt (91 km), Baiersbronn (98 km), Hotel in Schwarzenberg (111 km).





Day 11

Highlights: Hike or Bike into the black Forest

Enjoy a spa, or hike one of the great trails around Baiersbronn, but if you really want to build your appetite for a grand dinner in this tiny Mecca of haute cuisine, bike the Black Forest and climb the Schwarzwaldhochstrasse also known as the Black Forest High Road - your legs will tell you why! Enjoy the views, waterfalls, narrow hidden valleys and the spectacular ruins of the Allerheiligen Monastery. Dinner is on your own. Daily Distance: 83km (52 miles).

This evening's hotel:

Hotel Sackmann
Murgtalstraße 602
72270 Baiersbronn

Tel: +49 (0) 7447/289-0

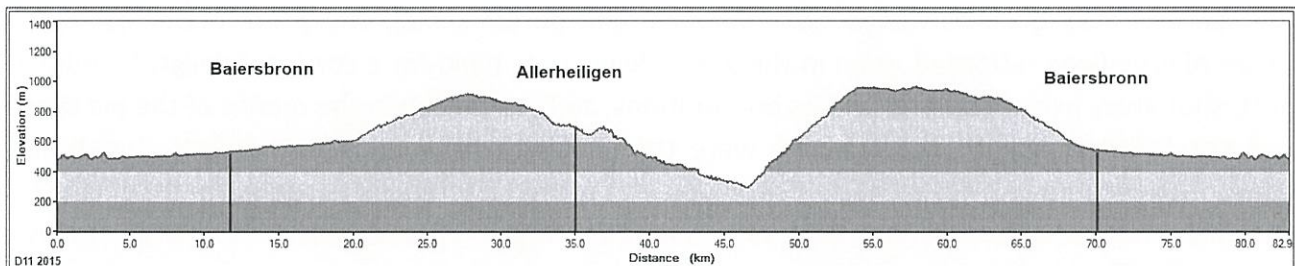
Tour leader phone numbers:

Philipp: +33 7 86 57 37 82
Jessica: +33 7 86 07 20 29

Loïc: +33 7 81 63 38 36

In an emergency call 112

Today's Ride: This is a really beautiful but challenging ride. We leave Baiersbronn and ride for the first 8 kilometers along the Murg River to warm up. Then we'll climb up to the Schwarzwaldhochstrasse cross over and drop down to the Monastery in Allerheiligen and the Waterfalls. We'll work our way again up to the Schwarzwaldhochstrasse and from the Kniebis Hütte we'll take a small road without traffic through the forest down into Baiersbronn.



Lunch and Dinner: Allerheiligen is a great option for the hikers and bikers to have lunch. Another option might be the Kniebis Hütte on top of the second climb. Dinner is on your own tonight.

You Might Like to Know: The Black Forest owes its name to the Romans who called the area of the Vosges and the Black Forest left and right of the Rhine 'silva negra' because the primeval forests were so dense that no one dared to enter. But by the 18th century the Black Forest had almost been completely rooted out, due to the need for wood in construction, heating or shipbuilding. Logs were shipped all the way down the Rhine to the Netherlands where the wood was used to build Amsterdam's timber framed houses and in Dutch shipyards. The clear-cut and not so dark Black Forest became a hazard for landslides and was reforested with pines and firs. The quick and very densely growing trees made the forest black again!



But Mark Twain probably gave one of the best accounts of how the Black Forest is:

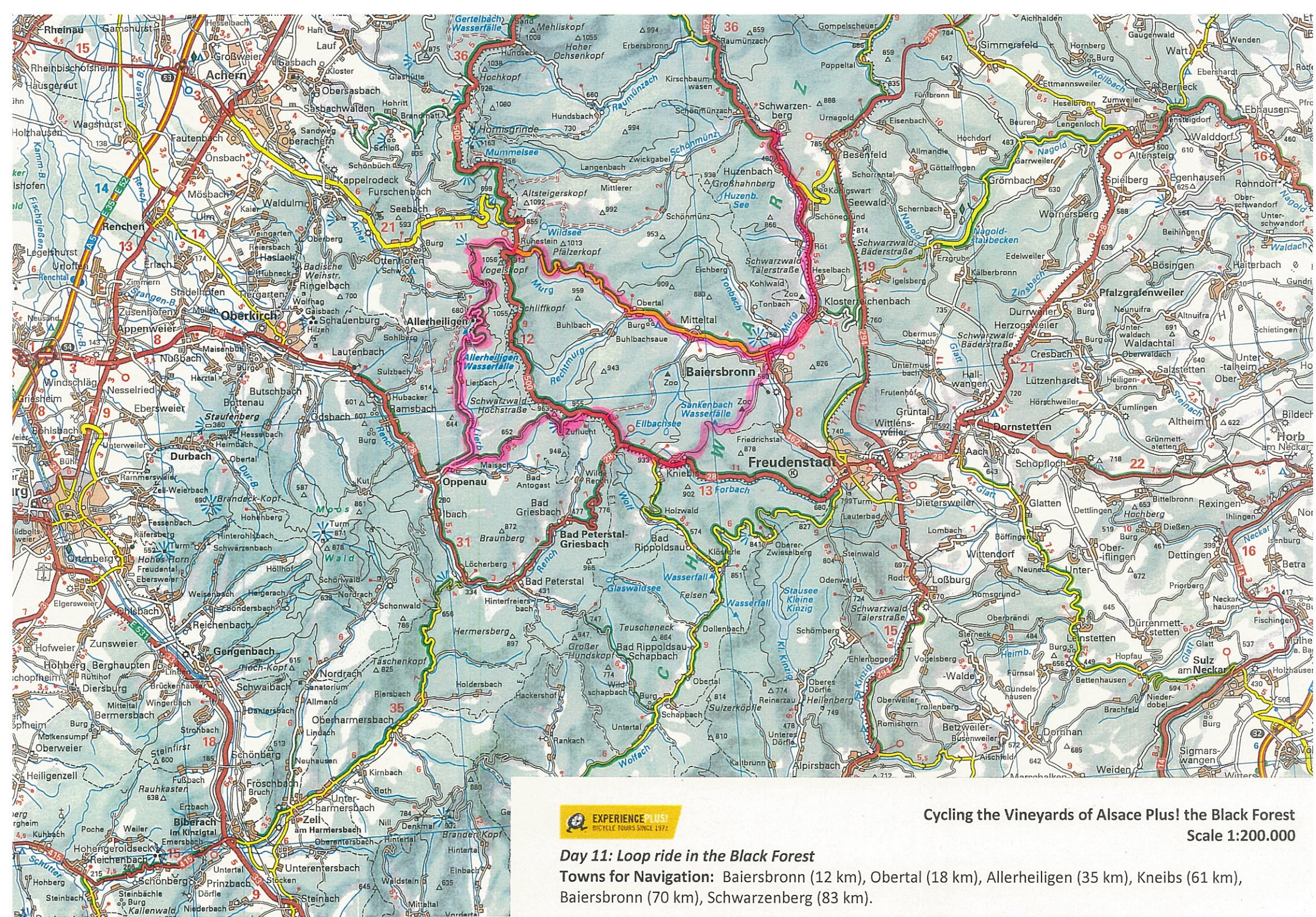
“From Baden-Baden we made the customary trip into the Black Forest. We were on foot most of the time. One cannot describe those noble woods, nor the feeling with which they inspire him. A feature of the feeling, however, is a deep sense of contentment; another feature of it is a buoyant, boyish gladness; and a third and very conspicuous feature of it is one's sense of the remoteness of the work-day world and his entire emancipation from it and its affairs.

Those woods stretch unbroken over a vast region; and everywhere they are such dense woods, and so still, and so piney and fragrant. The stems of the trees are trim and straight, and in many places all the ground is hidden for miles under a thick cushion of moss of a vivid green color, with not a decayed or ragged spot in its surface, and not a fallen leaf or twig to mar its immaculate tidiness. A rich cathedral gloom pervades the pillared aisles; so the stray flecks of sunlight that strike a trunk here and a bough yonder are strongly accented, and when they strike the moss they fairly seem to burn. But the weirdest effect, and the most enchanting is that produced by the diffused light of the low afternoon sun; no single ray is able to pierce its way in, then, but the diffused light takes color from moss and foliage, and pervades the place like a faint, greet-tinted mist, the theatrical fire of fairyland. The suggestion of mystery and the supernatural, which haunts the forest at all times is intensified by this unearthly glow....

All our afternoon's progress had been uphill. About five or half past we reached the summit, and all of a sudden the dense curtain of the forest parted and we looked down into a deep and beautiful gorge and out over a wide panorama of wooded mountains with their summits shining in the sun and their glade-furrowed sides dimmed with purple shade. The gorge under our feet--called Allerheiligen--afforded room in the grassy level at its head for a cozy and delightful human nest, shut away from the world and its botherations, and consequently the monks of the old times had not failed to spy it out; and here were the brown and comely ruins of their church and convent to prove that priests had as fine an instinct seven hundred years ago in ferreting out the choicest nooks and corners in a land as priests have today.” (Mark Twain, “A Tramp Abroad” Chapter 22, The Black Forest and Its Treasures).

Bike Safety Tip:

Avoid passing other vehicles (bikes, cars, trucks) on the right as other road users don't expect you to pass here. Also, large vehicles (buses and trucks have large blind spots on their right - be aware and beware).



Cycling the Vineyards of Alsace Plus! the Black Forest
Scale 1:200.000

Day 11: Loop ride in the Black Forest

Towns for Navigation: Baiersbronn (12 km), Obertal (18 km), Allerheiligen (35 km), Kneibis (61 km), Baiersbronn (70 km), Schwarzenberg (83 km).